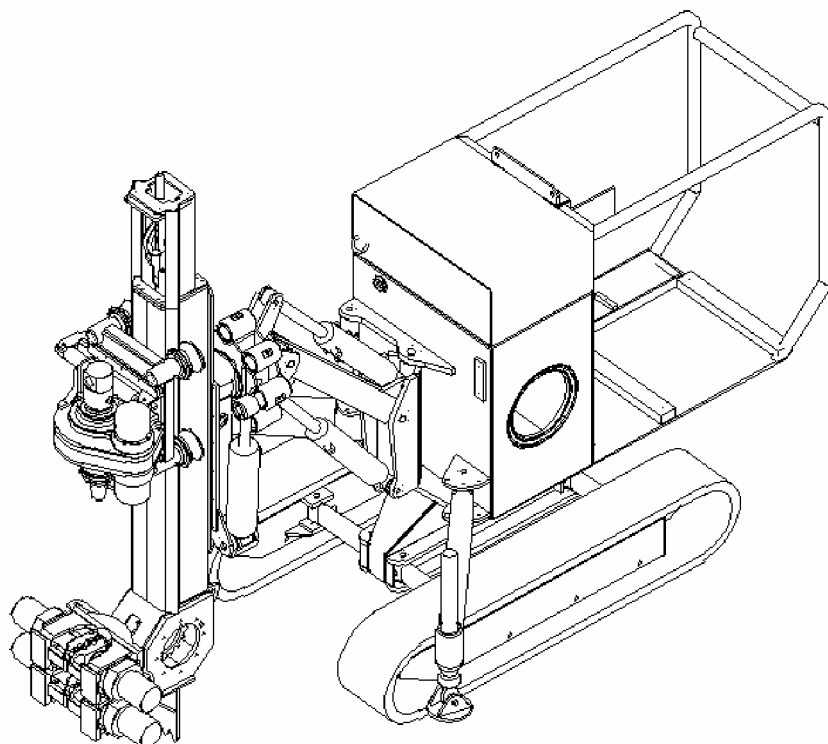


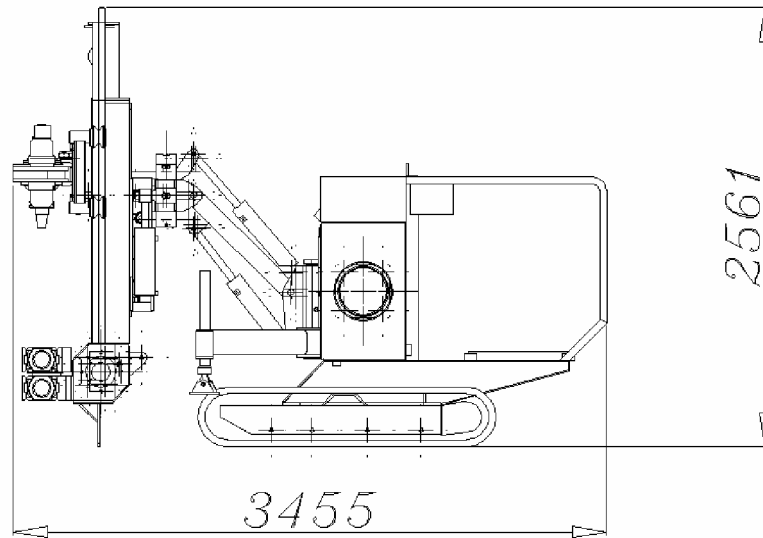


IPC DRILL 450

Conformity **CE**



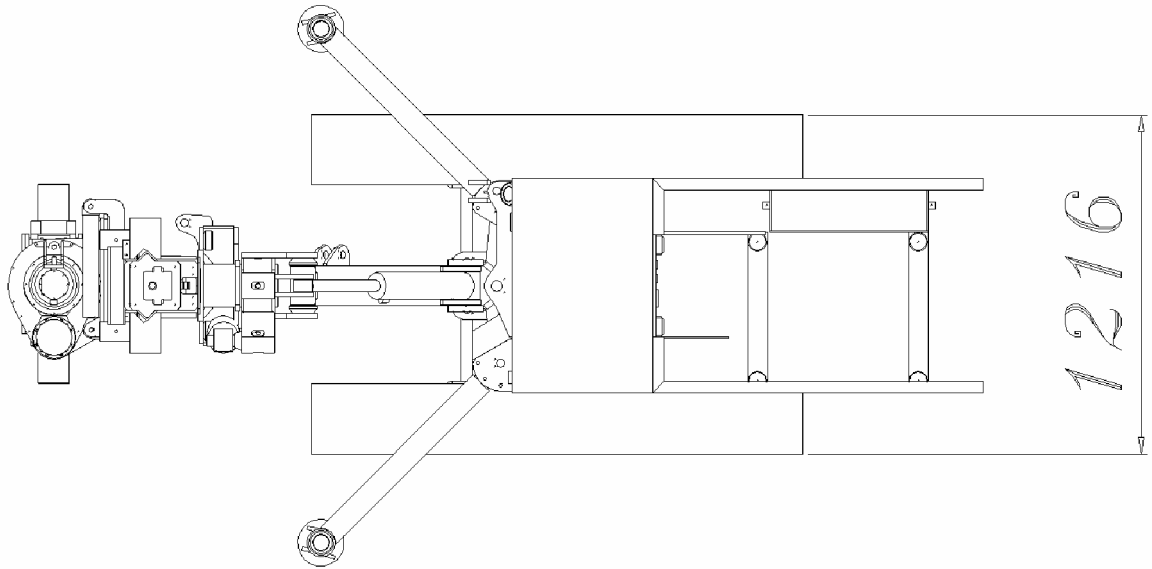
The DRILL 450 is a small size drill rig suitable to work in confined spaces. The equipment is designed to offer the advantages of the medium-size drilling machines.



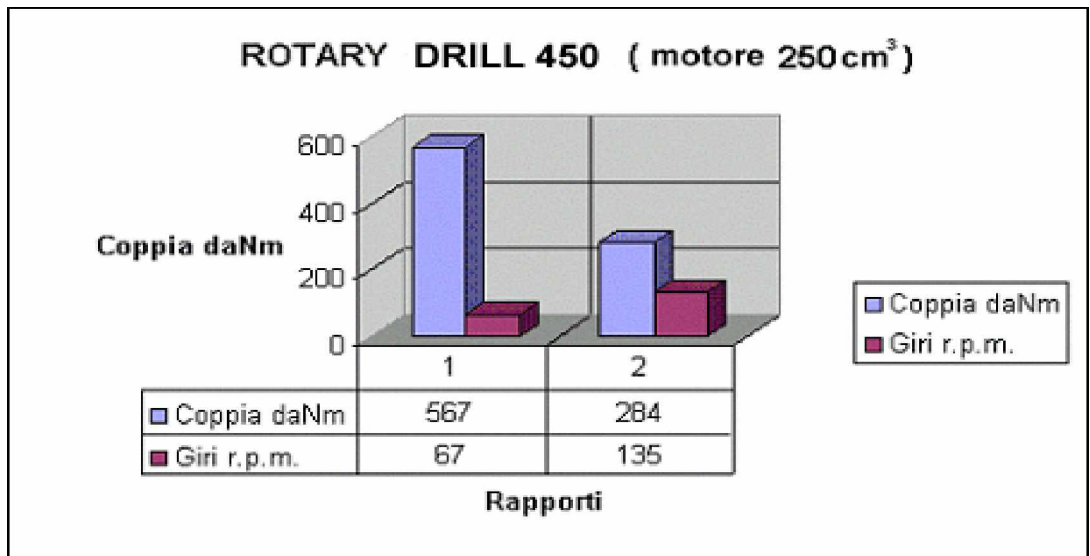
| | | |
|--------------------------|-------------------------|------------------------|
| UNDERCARRIAGE | Width | 760÷1216 mm |
| | Track shoes width | 250 mm |
| | Ground bearing pressure | 0,4 kg/cm ² |
| | Max. speed | 2,9 km/h |
| | Max. climbing capacity | 60 % |
| ENGINE HATZ 3L41C | Installed power | 35,9 kW |
| MAST | Max. pull | 4500 daN |
| | Max. thrust | 2500 daN |
| | Max. speed | 21 m/1' |
| WINCH | Max. pull | 600 daN |
| | Max. speed | 36 m/1' |
| WEIGHT | 3300 kg | |

| | |
|---------------------|---------------------|
| ROTARY MOTOR | 250 cm ³ |
| Max. torque (daNm) | 567 |
| Max. rev. (r.p.m.) | 135 |
| Gears | 2 |

| | Version 1 | Version 2 |
|------------------------|-----------|-----------|
| CLAMP/BREAKER | | |
| Max. opening | 145 | 195 |
| Clamping force | 15900 | 17720 |
| Breaking torque (daNm) | 1950 | 1950 |

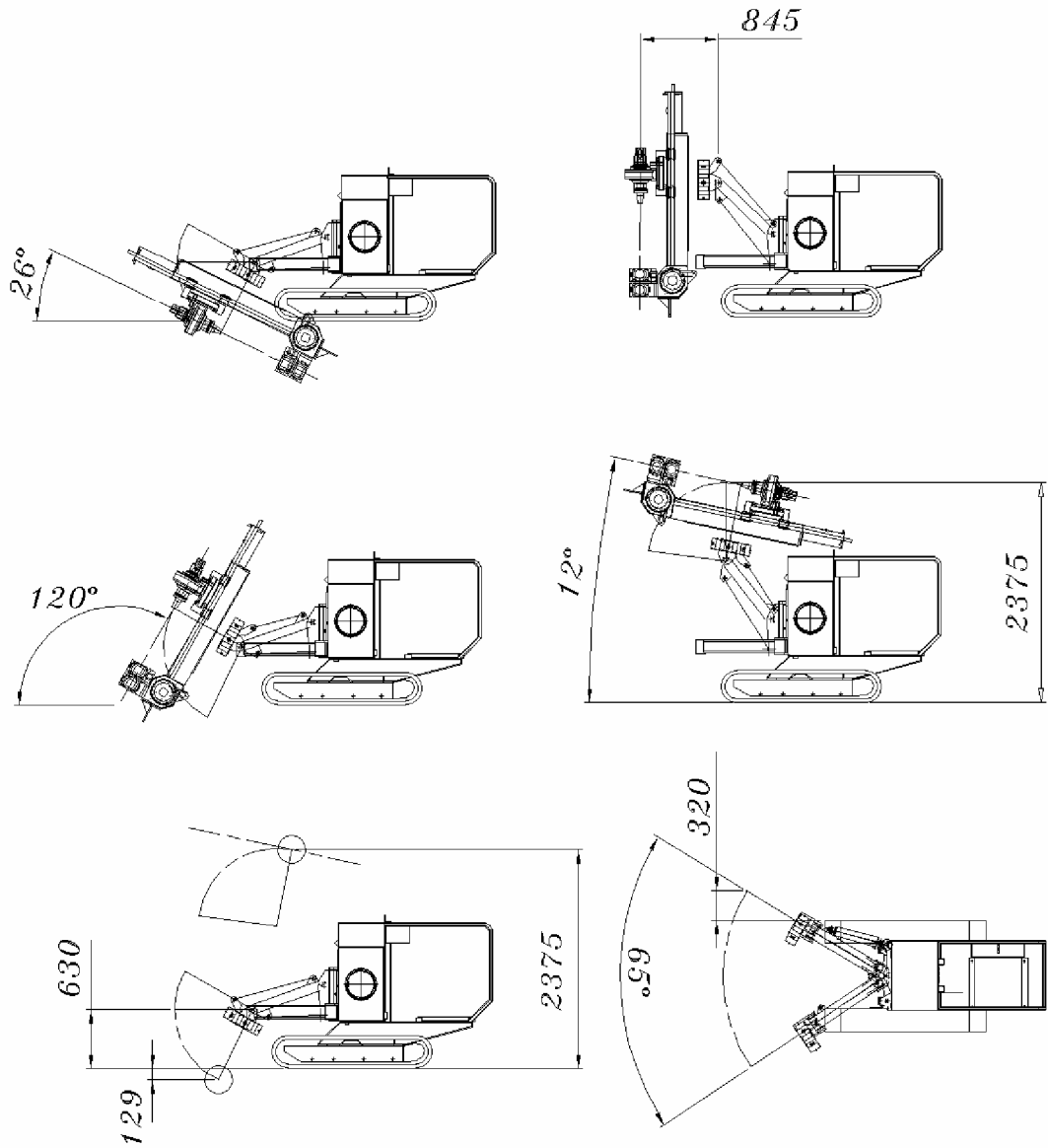


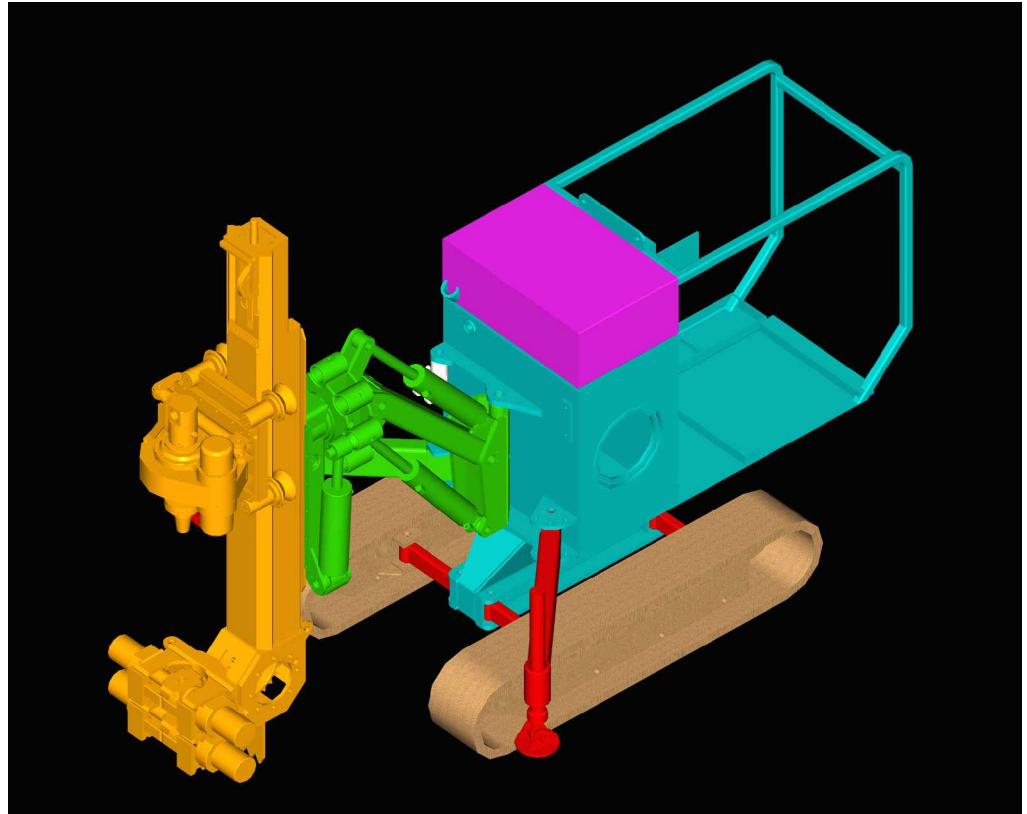
PERFORMANCE DIAGRAM



MOTOR 250 cm³

MOVEMENTS OF THE DRILLING RIG





ACCESSORIES

FOAM PUMP

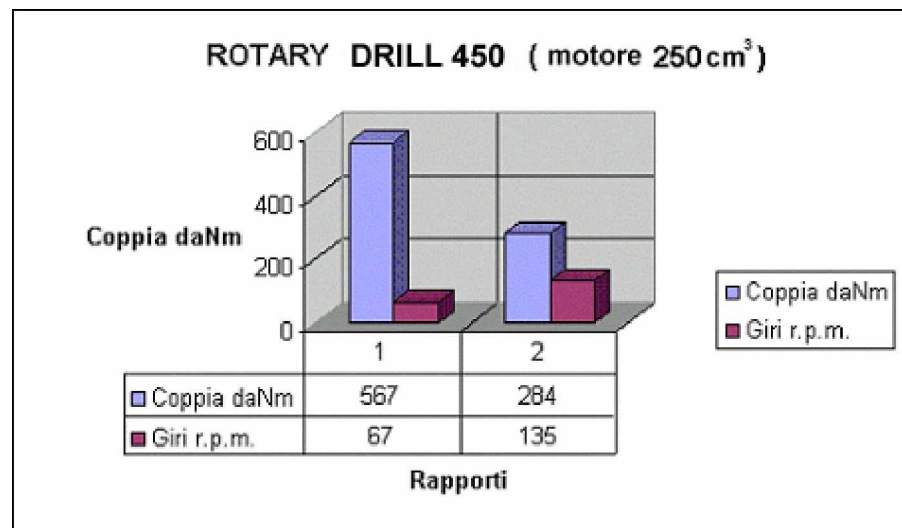
Maximum delivery 42 l/1' with max. pressure 50 bar.
A valve regulating the delivery from 0 to MAX controls the pump hydraulically.
The control is activated from the panel.

AIR SYSTEM

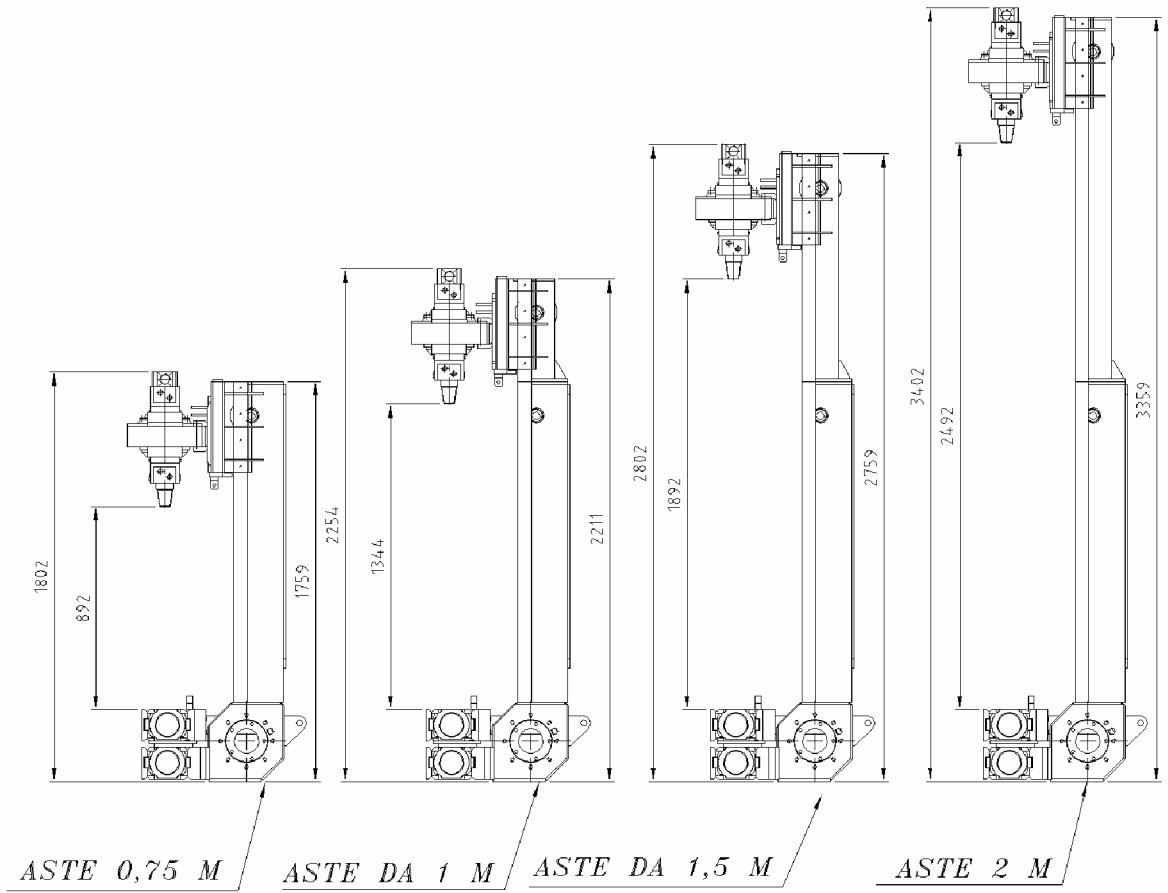
Pre-arrangement of the air system with ball cock and 1"½ hose connected to the swivel.

WATER SYSTEM

Complete with on-off valve and delivery hose to the swivel.
Supplied with pressure gauge and gauge protector.



MAST



| | | |
|------------------|--------------------------------|----------------------------------|
| Mast assy | L_{tot}=3402 mm | for drill rods L= 2000 mm |
| Mast assy | L_{tot}=2802 mm | for drill rods L= 1500 mm |
| Mast assy | L_{tot}=2254 mm | for drill rods L= 1000 mm |
| Mast assy | L_{tot}=1802 mm | for drill rods L= 750 mm |