
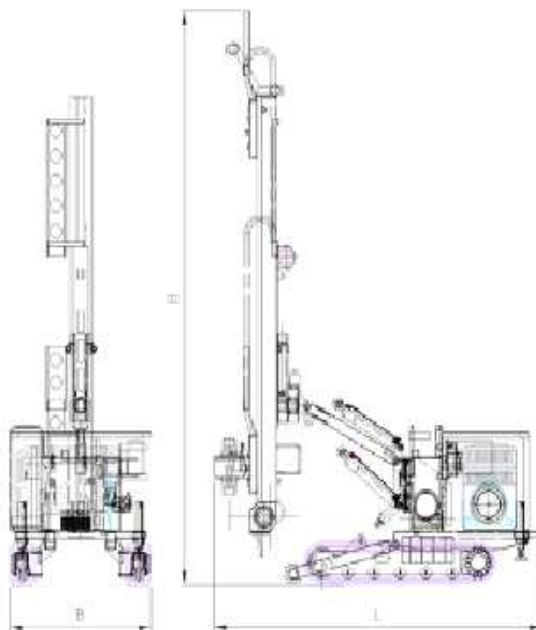


 **IPC DRILL 650**

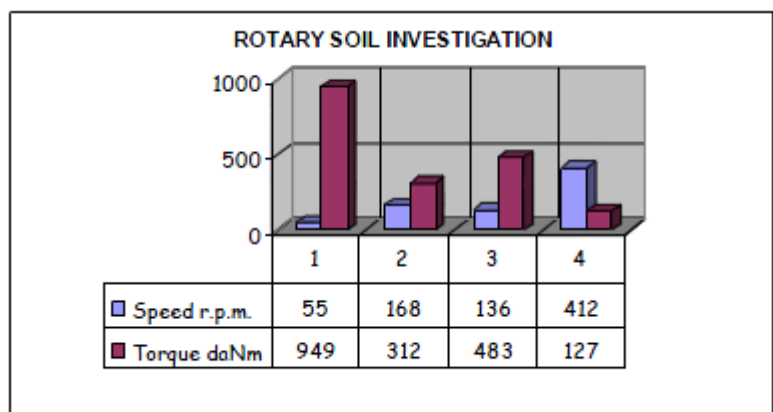
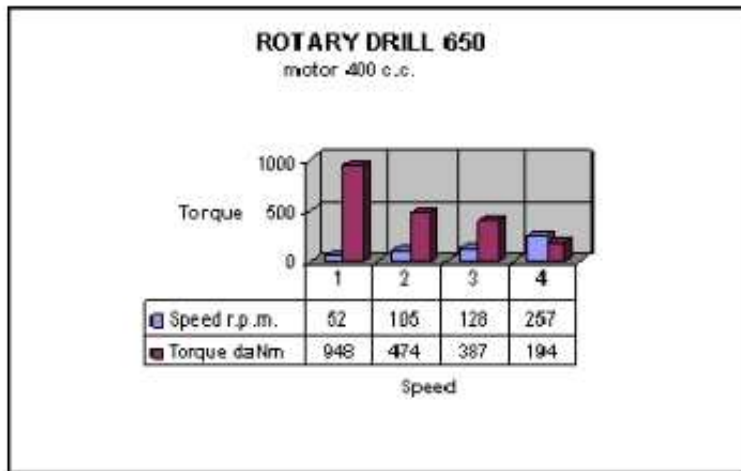
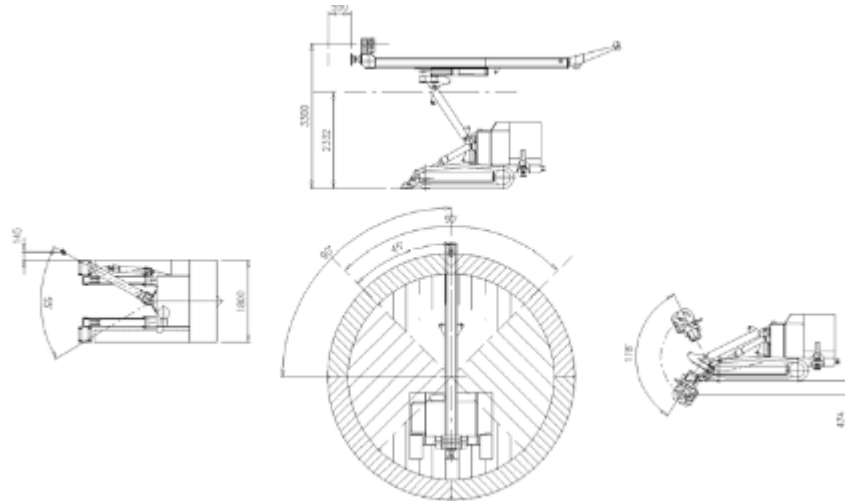
Conformity 



The DRILL 650 unit is the powerful medium size rig suitable for multi-directional drilling operations. The machine is designed for soil consolidation applications, micro-piling operations, anchors, core drilling and jet grouting.



UNDERCARRIAGE	Max. width	1800 mm
	Pitch	2000 mm
	Track shoes width	320 mm
	Max. speed	2,6 km/h
	Climbing capacity	60 %
	Ground bearing pressure	0,47 daN/cm ²
ENGINE PERKINS 1144PT Soundproof	Installed power @ 2200 r.p.m. (according to DIN 6271)	74.5 kW
	Noise level	71.7 dB(A)
STANDARD ROTARY	Max. torque	946 daNm (with 400cm ³ motors)
	Max. rev. (400 cm ³)	257 r.p.m.
	Max. rev.(315 cm ³)	327 r.p.m.
	Inner passage	94 mm
	Gears	n° 4
CLAMP/BREAKER	Max. opening	230 mm
	Clamping force	15904 daN
	Breaking torque	3000 daNm
MAST	Max. pull	4760 daN
	Max. thrust	3000 daN
	Max. speed	38 m/1'
	Stroke with 3 m rods	3730 mm
WINCH	Max. pull	1100 daN
	Max. speed (3rd layer)	28 m/1'
OVERALL DIMENSIONS	L = 4180 B = 1800 H = 6315 mm	
WEIGHT	6380 kg	



ACCESSORIES

SPECIAL ROTARY FOR BOREHOLE DRILLING IN SOIL INVESTIGATION

Piston motor with variable displacement assembled to planetary reducer.
The displacement variation is carried out from the control panel.

LUBRICATOR

Maximum oil capacity 8 l with air max. pressure 23 bar; manual regulation of the quantity of oil to be let in the air; 2" ports
Upon request, the device can be supplied controlled hydraulically with automatic selectors.

FOAM PUMP

Maximum delivery 15-36 l/1' with max. pressure 120-50 bar.
A valve regulating the delivery from 0 to MAX controls the pump hydraulically.
The control is activated from the panel.

SCREW PUMP

Maximum delivery 180 l/1' with max. pressure 24 bar.
A valve regulating the delivery from 0 to MAX controls the pump hydraulically.
The control is activated from the panel.

PRE-ARRANGEMENT FOR JET GROUTING

The machine is pre-arranged for jet grouting slow continuous pull-up.
The system includes a pull-up speed governor.
The rotary can be equipped with chuck for clamping the drill rods.
Drill depth 10 m with rods \varnothing 90 mm.

AIR SYSTEM

Pre-arrangement of the air system with ball cock and 1½" hose connected to the swivel.

WATER SYSTEM

Complete with on-off valve and delivery hose to the swivel.
Supplied with pressure gauge and gauge protector.

TOP HAMMER

ELECTRIC GEAR (pilot on the control panel, standard for double motor rotary)