
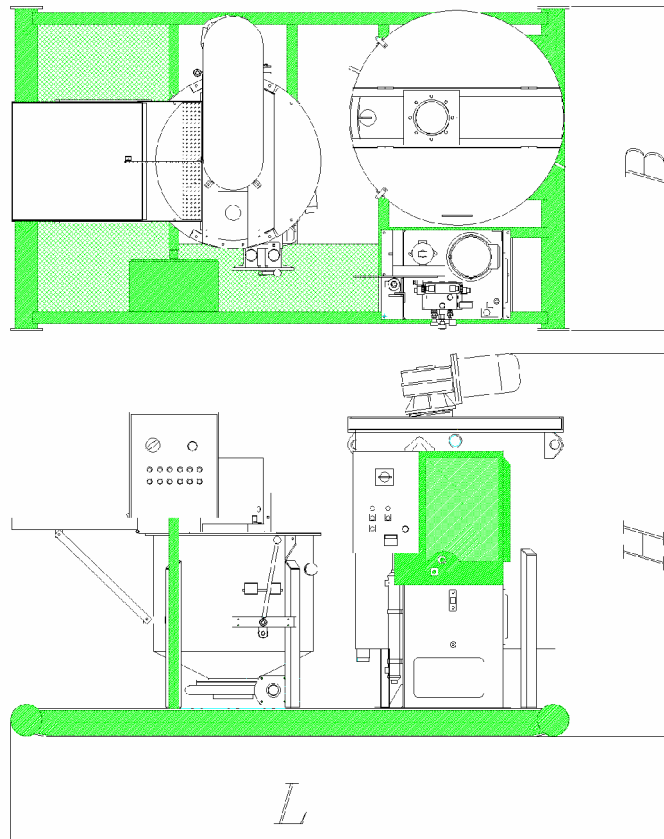


 **IPC GI ET 4: MT31+A80+GP30**Conformity 

The grout mixing plant GI ET 4 is used to mix and grout water and cement. The electric plant on skid is composed of a turbomixer MT 31 E, an agitator A 80 E, and a grout pump GP 30. The agitator and the turbomixer are controlled from the same electric panel whereas the grout pump is piloted from its own panel. Hydraulic valves regulate the grout pressure and the delivery.



| DIMENSIONS      |                  |                                 |
|-----------------|------------------|---------------------------------|
| L               | 2800 mm          |                                 |
| B               | 1650 mm          |                                 |
| H               | 1925 mm          |                                 |
| dry weight      | 1480 kg          |                                 |
| TECHNICAL DATA  |                  |                                 |
| Output per hour | 4 m <sup>3</sup> |                                 |
| Max. pressure   | 9 MPa            |                                 |
| Max. delivery   | 40 l/1'          |                                 |
| AGITATOR        | Max. capacity    | 800 l                           |
|                 | Motor            | Electric; 1,5 kW ; 50 Hz ; IP65 |
|                 | Max. speed       | 22 r.p.m.                       |
| TURBOMIXER      | Max. capacity    | 310 l                           |
|                 | Max. delivery    | 700 l/1'                        |
|                 | Manometric head  | 20 m                            |
|                 | Motor            | Electric; 7,5 kW ; 50 Hz ; IP65 |
| GROUT PUMP      | Max. speed       | 1450 r.p.m.                     |
|                 | Max. delivery    | 40 l/1'                         |
|                 | Max. pressure    | 9 MPa                           |
|                 | Motor            | Electric ; 4 kW ; 50 Hz ; IP65  |