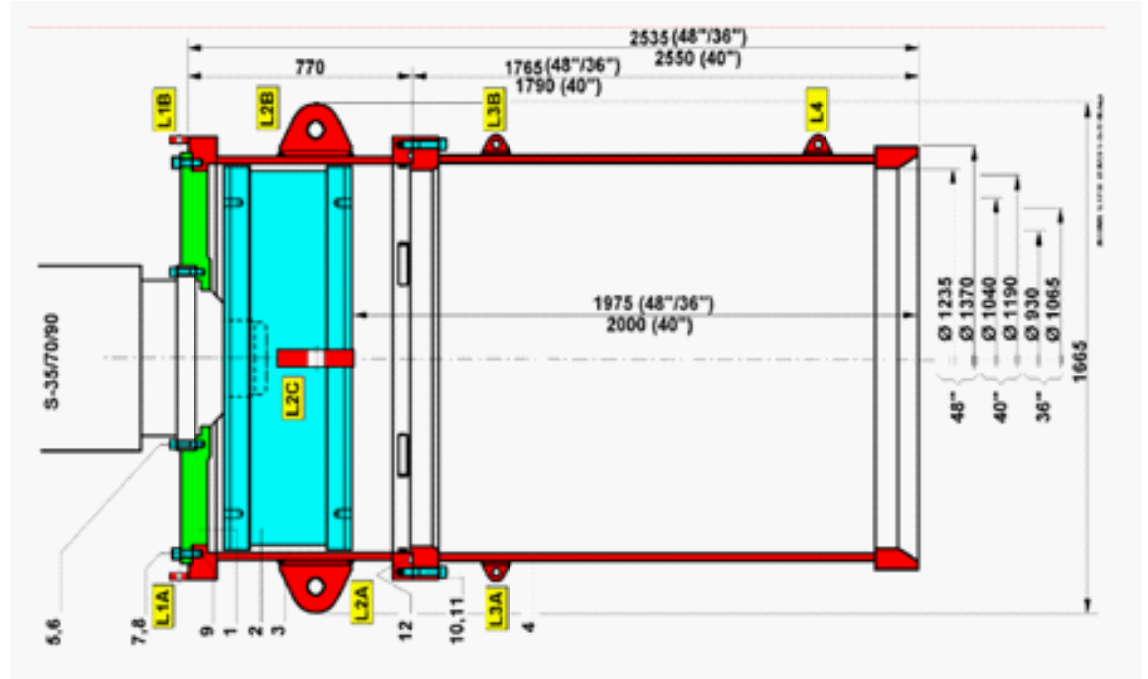


## 48" sleeve for S-70/S-90



<b>Weights</b>			
Connection ring	816 kg		
Anvil housing	1040 kg		
Anvil	4200 kg		
<b>Total</b>	<b>6056 kg</b>		
Pile quiding 36"	1835 kg		
Pile quiding 28"	1681 kg		
pile quiding 24"	1875 kg		
<b>Measures (mm)</b>	<b>48"</b>	<b>40"</b>	<b>36"</b>
Overall length	2535	2550	2535
Overall width	1665	1665	1665
Stick-up length	1975	2000	1975
<b>Lifting eyes</b>	<b>WLL (working load limit)</b>	<b>Hole diameter</b>	<b>Thickness</b>
L1A/B	6.5 tons	Ø 27 mm	30 mm
L2A/B/C	25 tons	Ø 54 mm	45 mm
L3A/B	6.5 tons	Ø 27 mm	30 mm
L4	6.5 tons	Ø 27 mm	30 mm